

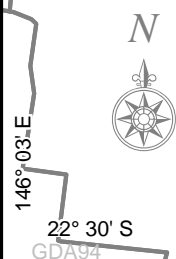
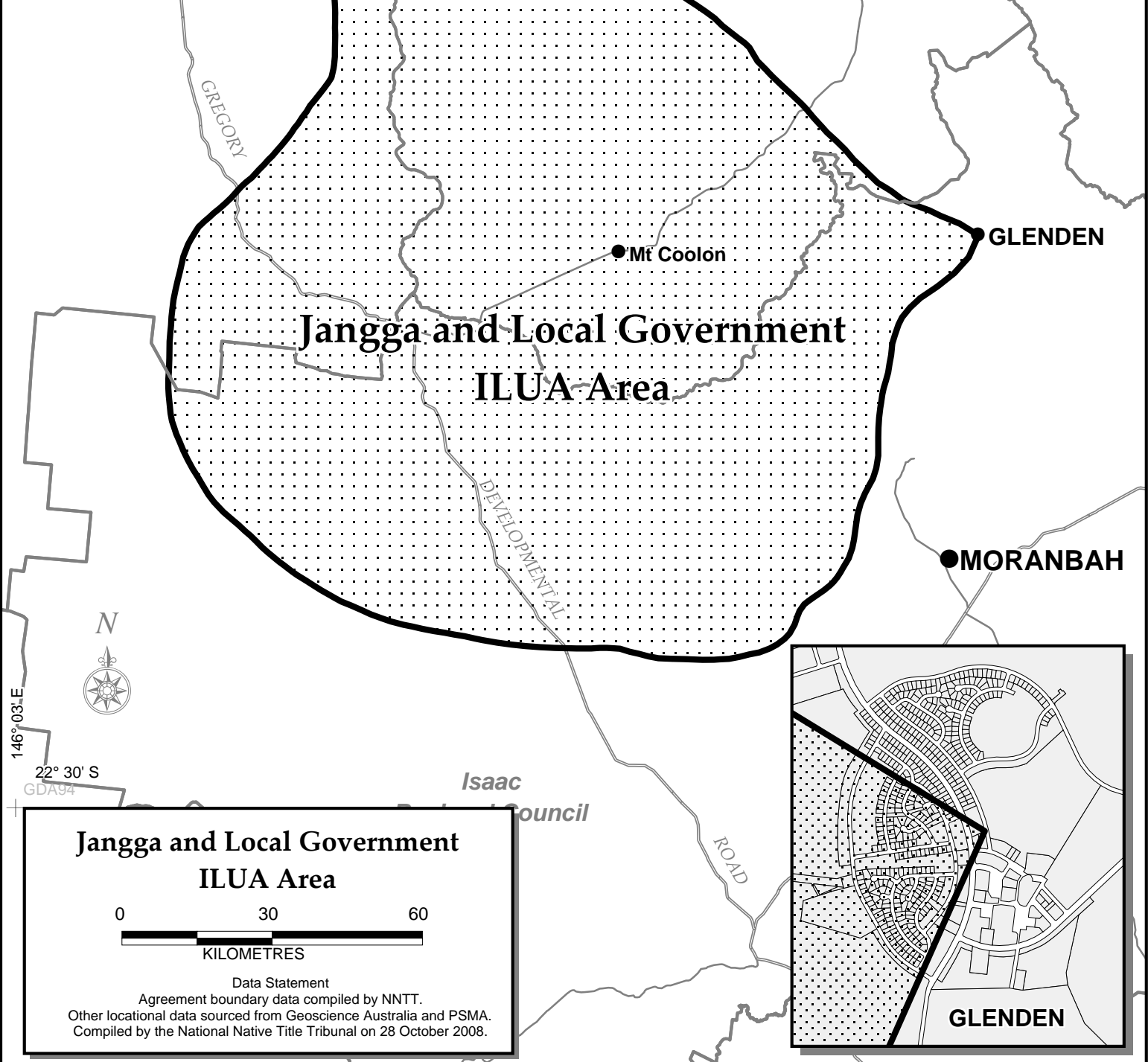
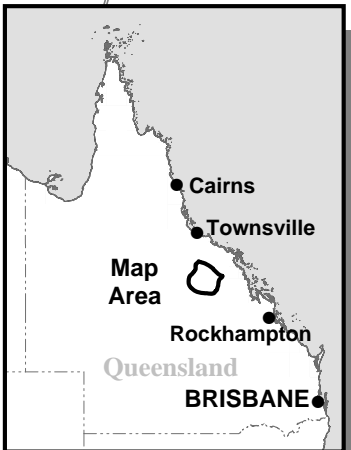
The Registrar, the National Native Title Tribunal and its staff, members and agents and the Commonwealth (collectively the Commonwealth) accept no liability and give no undertakings guarantees or warranties concerning the accuracy, completeness or fitness for purpose of the information provided. In return for being allowed to access this information you agree to release and indemnify the Commonwealth and third party data suppliers in respect of all claims, expenses, losses, damages and costs arising directly or indirectly from your use of the information and the use of the information you obtained by any third party.

19° 44' S


148° 26' E



Copyright © Commonwealth of Australia



**Jangga and Local Government
ILUA Area**

0 30 60

 KILOMETRES

Data Statement
 Agreement boundary data compiled by NNTT.
 Other locational data sourced from Geoscience Australia and PSMA.
 Compiled by the National Native Title Tribunal on 28 October 2008.

